

AUCOOT



ADDRESS

Clifton Road, Crouch End, London N8

PRICE

£1,750,000

ARCHITECT

Crawford Architects

INFORMATION

A modern three bedroom house set over three floors on one of Crouch End's most sought-after streets, designed by the renowned Crawford Architects. This detached house reimagines urban living, thoughtfully crafted to blend striking architectural design and innovative features with flexible, light-filled living spaces.

Externally, the home makes a confident statement with its striking façade of black brick and charred larch cladding, standing out elegantly against the streetscape. Beyond the forecourt and front boundary wall, the journey continues into an interior that is equally captivating. Inside, the black brick is complemented by a muted palette of soft greys and birch-faced plywood, creating a cohesive aesthetic that flows throughout the house.

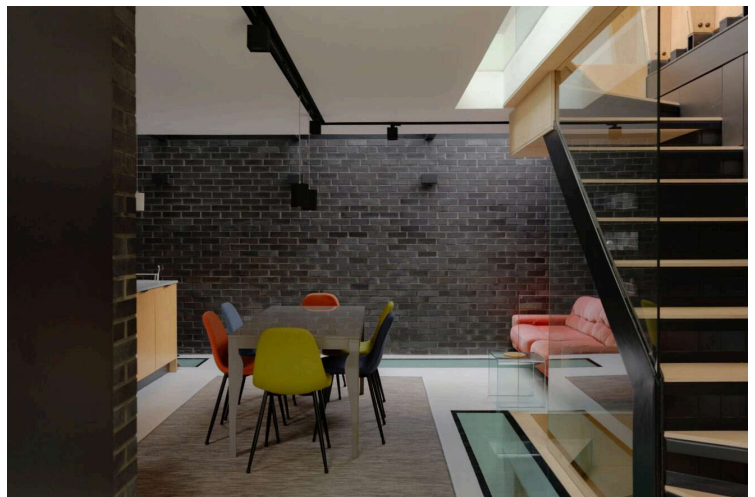
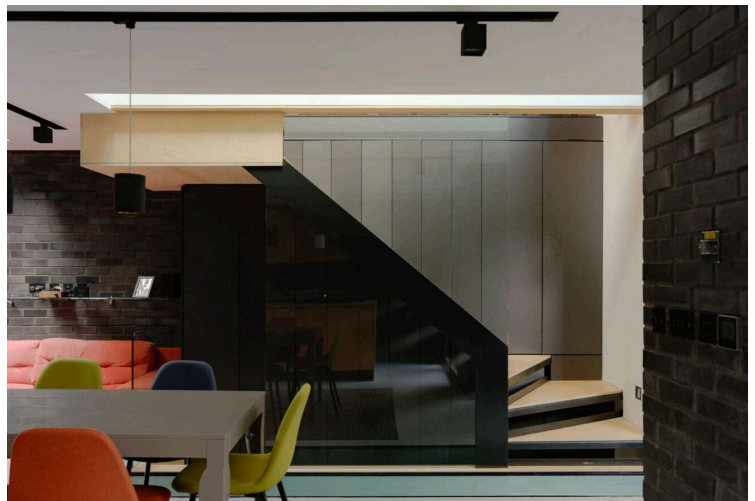
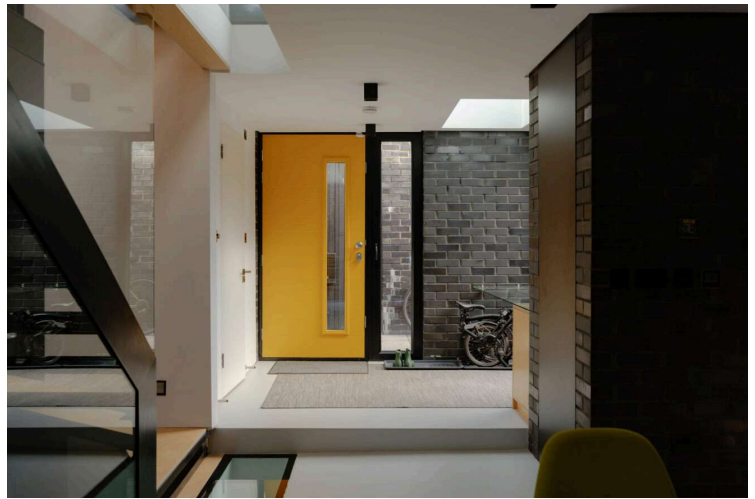
The principle of design is centred around drawing in natural light, with skylights, floor-to-ceiling glazing, internal walk-on glass panels, and a lower-ground courtyard all working in harmony to flood the interiors with light and blur the boundaries between inside and out. Bespoke white oak plywood joinery, resin floors, and Siemens appliances make the open-plan kitchen and reception space a hub for hosting. A useful WC with a skylight completes the ground floor.

Ascending the steel feature staircase, you're welcomed into an impressive living area. Expansive ceiling heights, married with structural glulam beams, make this an intimate yet generous space. This space opens directly onto a tranquil roof garden with leafy vistas across neighbouring gardens.

Three bedrooms and two bathrooms are positioned on the lower levels. Crawford's architectural design has allowed for impressive ceiling height, which ensures natural light permeates the spaces. The minimalist principal bedroom features a modern en suite bathroom and floor-to-ceiling glass doors opening onto a courtyard.

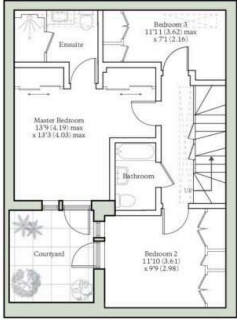
EPC

=B

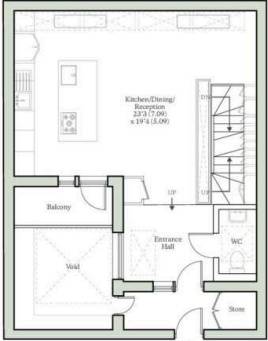




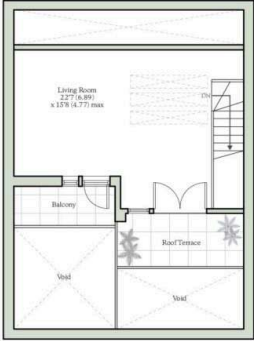
CLIFTON ROAD, LONDON, N8
Total Internal Area = 1507 sq ft / 140 sq m (approx. including voids)
For identification only - Not to scale



LOWER GROUND FLOOR



GROUND FLOOR



FIRST FLOOR

AUCOOT
RICS Property Measurements Standard