

AUCOOT



ADDRESS

Copper Lane, Stoke Newington, London, N16

PRICE

£750,000

ARCHITECT

Henley Halebrown and Rorrison

INFORMATION

A rarely available and beautifully finished two-bedroom home, which is part of an award-winning cohousing scheme designed by acclaimed architects Henley Halebrown and Rorrison. Set within a small group of six houses, which are arranged around a shared central courtyard and lush communal gardens, this home invites a balanced way of living, where privacy and community coexist harmoniously.

Tucked away at the end of a private path in Stoke Newington, the house is constructed from timber and brick, chosen to sit sensitively within the natural surroundings. It follows an inverted layout, with the main entrance on the upper level. Inside, the space feels both generous and serene, with glazing on three walls and a skylight drawing in natural light. The upper floor is currently arranged as two reception areas, divided by a central staircase and timber supports. A wood-burning stove and bespoke joinery create a warm, inviting atmosphere.

The lower level contains a galley kitchen with integrated appliances and expansive glazing that frames a view of an ivy-covered wall. Underfoot, polished concrete with underfloor heating runs throughout. The main bedroom and bathroom are also located on this level.

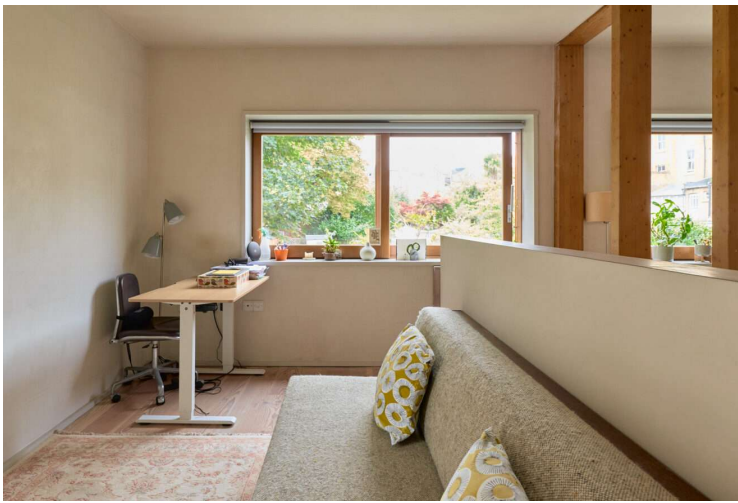
Sustainability was a key consideration in the scheme, which includes triple glazing, heat-recovery ventilation, solar thermal water heating and airtight construction.

A door leads directly from the house into a large communal room that can be reserved for gatherings, exhibitions, or creative projects. Residents also benefit from shared amenities including a laundry room, workshop and shower room. Outside there is a communal greenhouse and beds for growing fruit and vegetables.

EPC

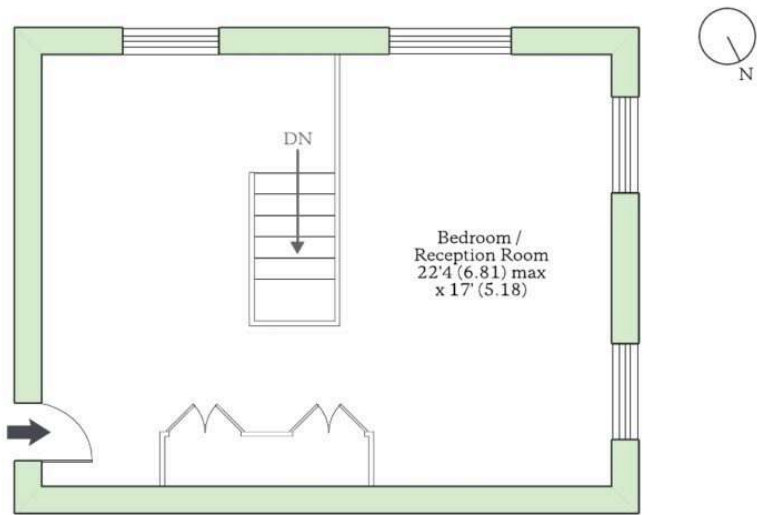
=B



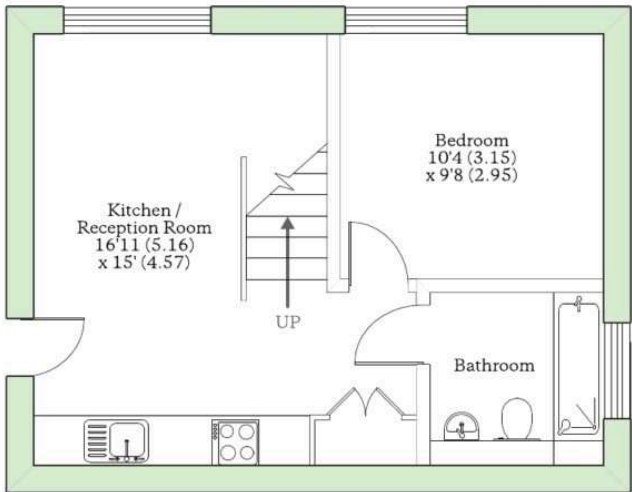


COPPER LANE, LONDON, N16


Approximate Area = 758 sq ft / 70.4 sq m
For identification only - Not to scale



FIRST FLOOR



GROUND FLOOR

 Floor plan produced in accordance with RICS Property Measurement 2nd Edition, incorporating International Property Measurement Standards (IPMS2 Residential). © nichecom 2025. Produced for Aucoot. REF: 1331748

AUCOOT

